

# IBM SPSS Download and Installation Guide

---

The following step by step guide will show how to do the following:

1. Get the SPSS Statistics 26 Installation Files
2. Install SPSS Statistics 26
3. License SPSS Statistics 26

## Getting SPSS Installation Files

1. Click on the following link:

<https://www.spssanalyticspartner.com/supportdownloads/>

2. On the **SPSS Software Downloads** page, Click on **Access Customer Portal** as shown in Figure 1 below:

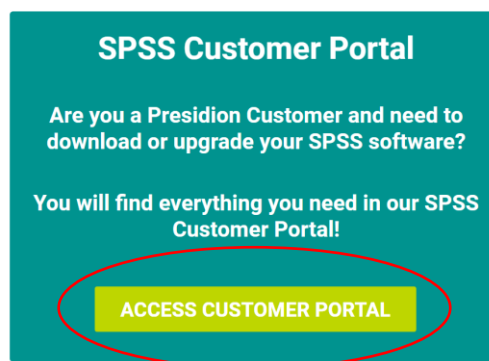


Figure 1 - SPSS Customer Portal

3. On the **IBM SPSS Customer Portal** page, click the + symbol beside IBM SPSS Statistics as shown in Figure 2 below:



Figure 2 - IBM SPSS Statistics File Location

4. You will be presented with a large list of files. From this list check the box beside either Statistics 26 Win 64bit OR Statistics Win 32bit depending on whether your operating system is a Windows 64 bit or Windows 32 bit system:

Statistics 26 Win 64bit	exe	<input type="checkbox"/>
Statistics 26 Win 32bit	exe	<input type="checkbox"/>

Figure 3 – SPSS Statistics Windows installation files

If you have an Apple MAC, check the option beside Statistics 26 Mac dmg:



Figure 4 - SPSS Statistics MAC installation files

## Windows 64 bit OR Windows 32 bit – How do you find out?

- A. Start up Windows Explorer (click on yellow folder on taskbar)
- B. Right click on This PC as shown in Figure 5 and choose Properties

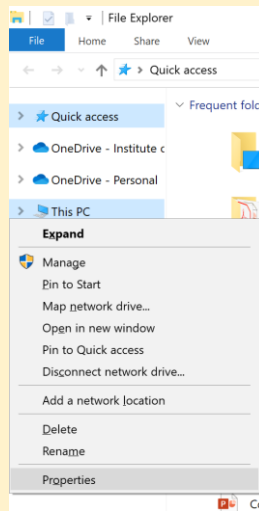


Figure 5 - Windows Explorer

C. Figure 6 shows the screen that should appear. The red circle indicates what to look for. In this case, the PC is running a Windows 64 bit operating system.

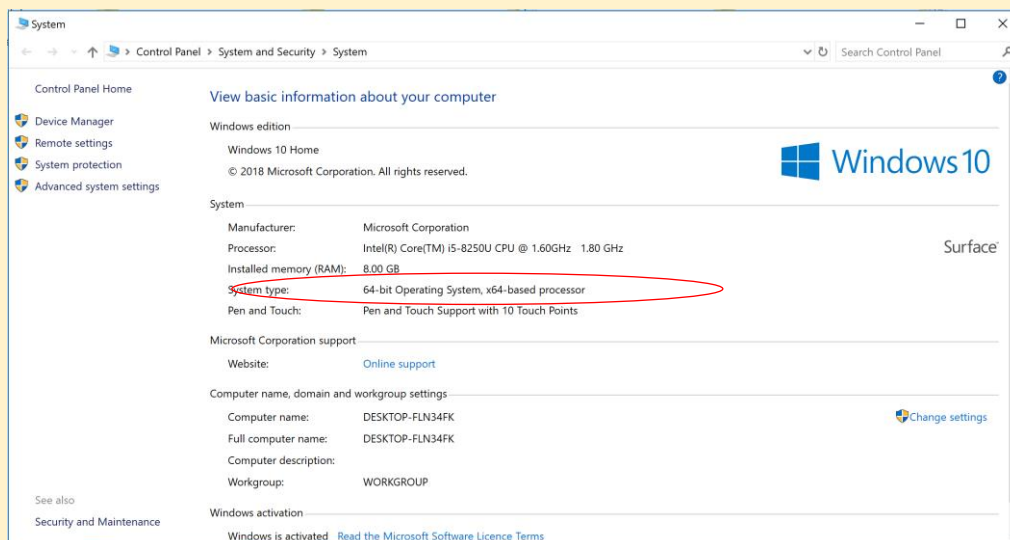


Figure 6 - Windows System Information

- Choose the appropriate installation file and click the **Download** button at the bottom of the list.



Figure 7 - SPSS Download button

- You will be presented with a form shown in Figure 8 asking you for some information including your email address. It is vital that you use a valid email address here as a link to get the installation file will be emailed to you.

You have selected to download the following files:  
Statistics 26 Win 64bit

### Download your IBM SPSS Software

Email:

First Name:

Last Name:

Job Title:

Organisation:

Figure 8 - Download Form

- Click the **Download** button when you have filled out your details. You will receive an email inside 20 minutes with a link to download the installation file as in Figure 9.

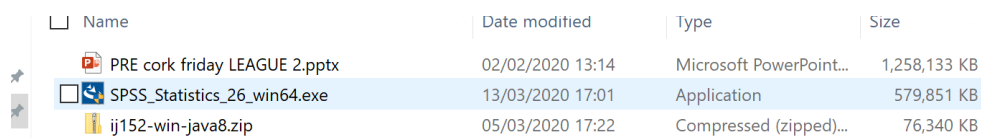


Figure 9 - Installation Email

- Click on the link indicated above to download the installation file. The file will download through your web browser. Once the file has fully downloaded you are now ready to start the installation process. The steps for this process are detailed in the next section of the document.

## SPSS Installation Step by Step (Windows Only)

1. The installation file will download to your **Downloads** folder on your PC/Laptop.
2. Go to this folder and click on the file to start the installation process as shown in Figure 10



Name	Date modified	Type	Size
PRE cork friday LEAGUE 2.pptx	02/02/2020 13:14	Microsoft PowerPoint...	1,258,133 KB
SPSS_Statistics_26_win64.exe	13/03/2020 17:01	Application	579,851 KB
ij152-win-java8.zip	05/03/2020 17:22	Compressed (zipped)...	76,340 KB

Figure 10 - SPSS Installation File (for 64 bit Windows OS)

3. The installation process starts (you may be asked to allow permission for the installation process to make changes to your device – say yes to this) and you will be presented with the following screen (it may take a few minutes for it to appear):

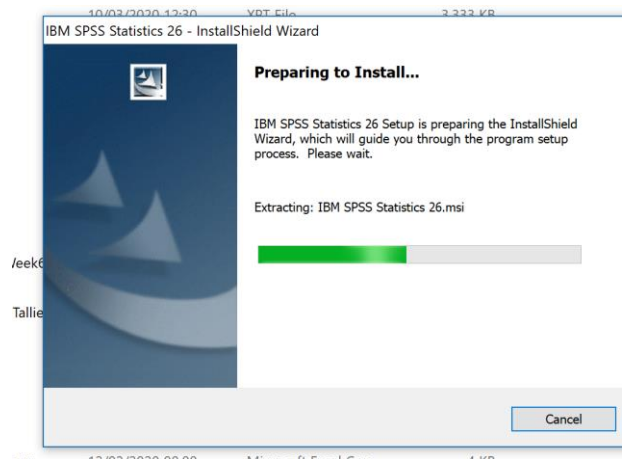


Figure 11 - Initial Installation Screen

4. Choose **Next** to accept the Terms and Conditions as shown in the screenshot below:

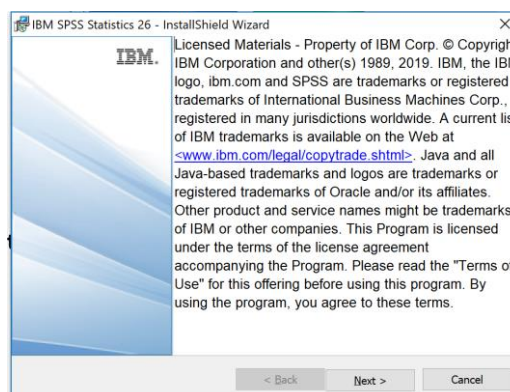


Figure 12 - SPSS Terms and Conditions

5. On the next screen choose the option “I accept the terms in the License agreement” and click **Next**:

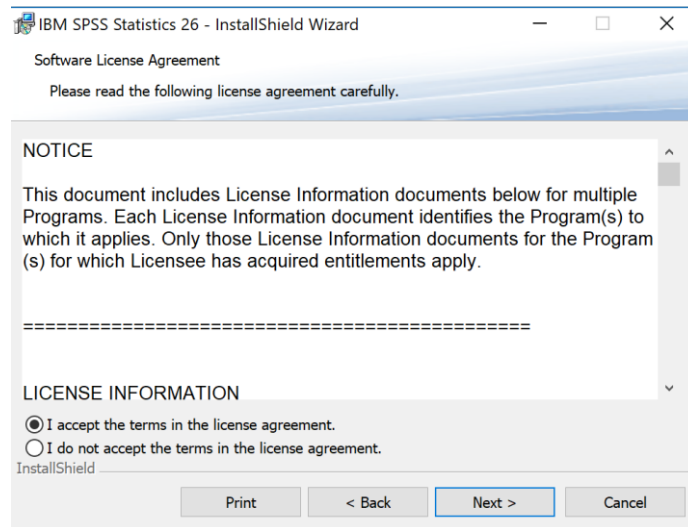


Figure 13 - SPSS Software Licence Agreement

6. On the next screen you will be asked if you want to install the Python Essentials pack for SPSS. Choose **No** here and click **Next** as this is not necessary for what you will require to do with SPSS for your project or the statistics module:

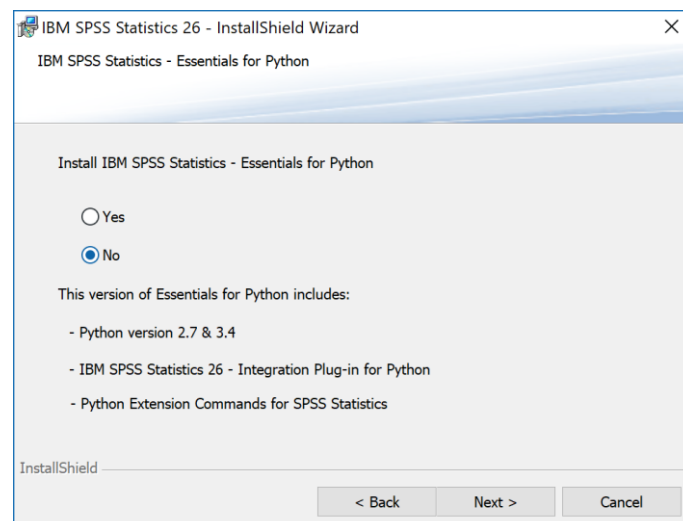


Figure 14 - Essentials for Python

7. The next screen will ask you where you want to install SPSS to. You do not need to make any changes on this screen so just click **Next**.

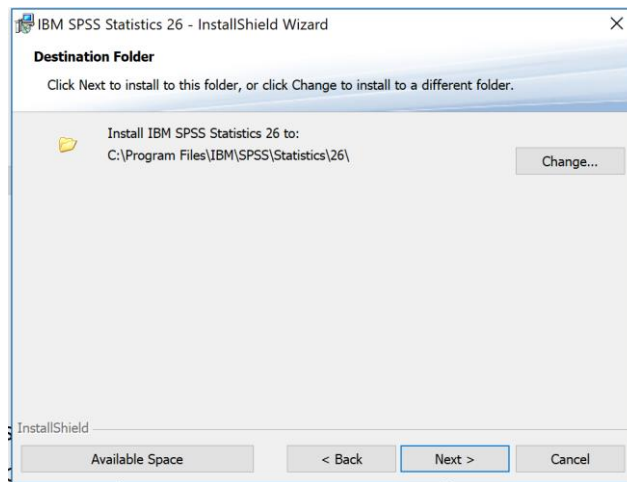


Figure 15 - Installation Location

8. The **Ready to Install Program** screen appears. Click the **Install** button to start the software installation process.

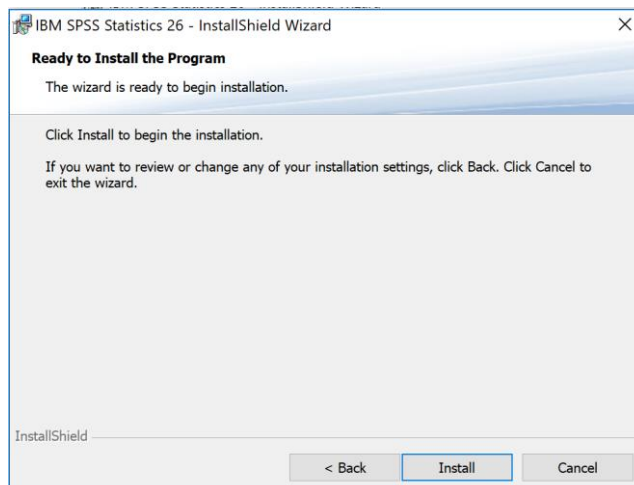


Figure 16 - Ready to Install

9. The installation process will begin as shown in Figure 17.

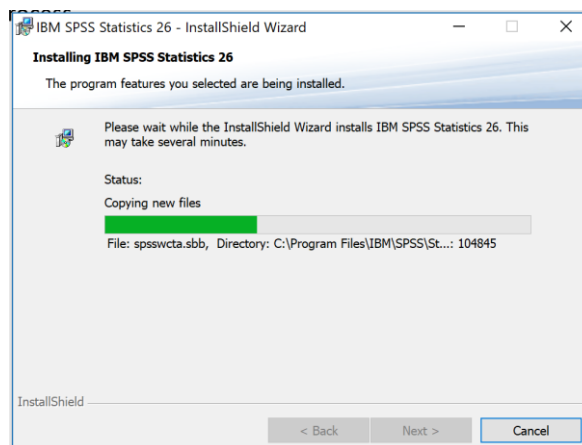


Figure 17 - Installation process

10. Once the installation has completed the screen shown in Figure 18 appears. Check the option to **Start the SPSS Statistics 26 Licence Authorisation Wizard** and click **Finish**

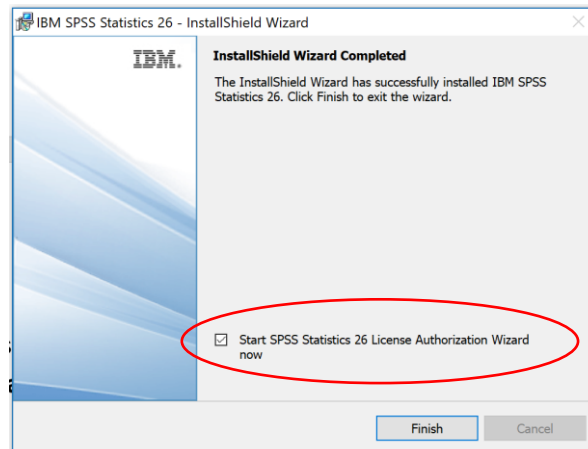


Figure 18 - Installation Completed

## Licensing SPSS Statistics

The following steps will take you through Licensing SPSS Statistics. You must complete this process for SPSS to work correctly.

1. Once you click **Finish** on the Installation Process the Licensing screen should appear as indicated in Figure 19. Click **Next**

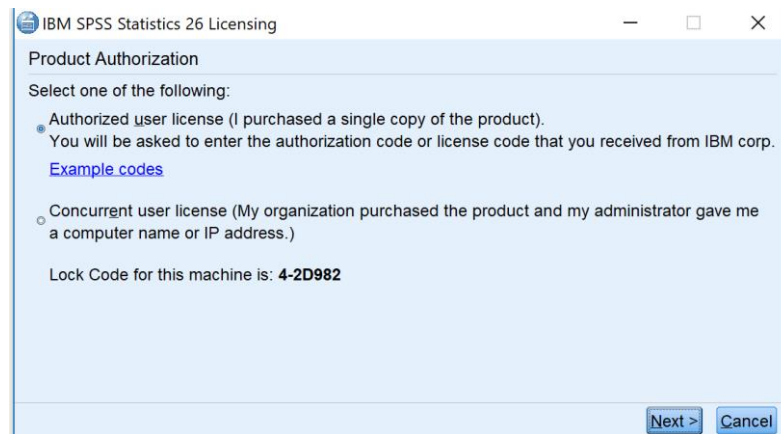


Figure 19 - SPSS Licensing Wizard

2. The Enter Codes screen should appear. Enter the following code: **4c2b1232c971026ace20** and click **Next**
3. Once the licensing process has completed successfully you should see the following screen:

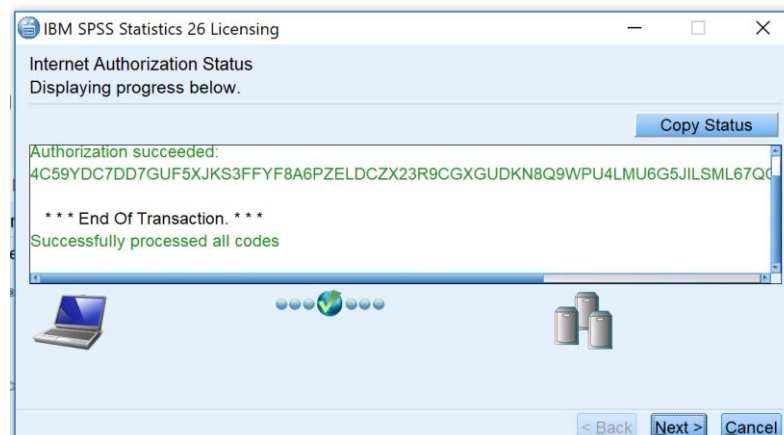


Figure 20 - Successful Licensing

4. If your code was input correctly you will see a Green message similar to that in Figure 20. Click **Next** and **Finish**. A screen similar to Figure 21 will appear.



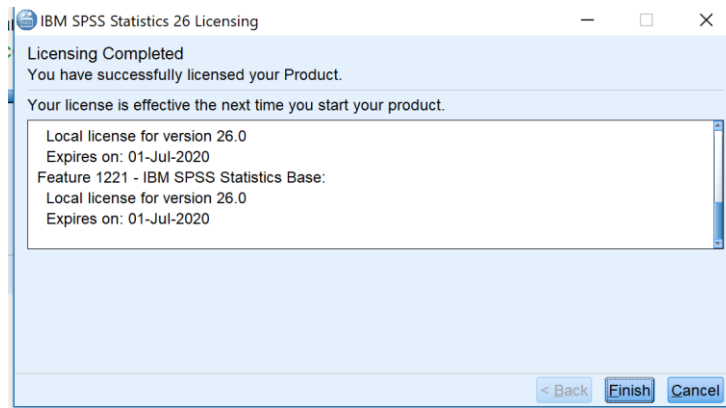


Figure 21 - Licensing Completed

5. You have now completed the Licensing process.

### Alternative Licensing Method

If the Licensing Wizard fails to start after the Installation Process has completed, search for the **IBM SPSS Statistics License Authorisation Wizard** on your machine as shown in Figure 22.

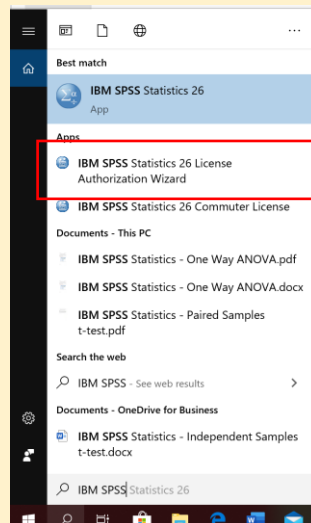


Figure 22 - Finding IBM SPSS Statistics 26 License Authorization Wizard

Run the Authorization Wizard as indicated in Figure 22. Click Next on the first screen that appears and repeat Steps 1 – 5 of the Licensing process outlined above.